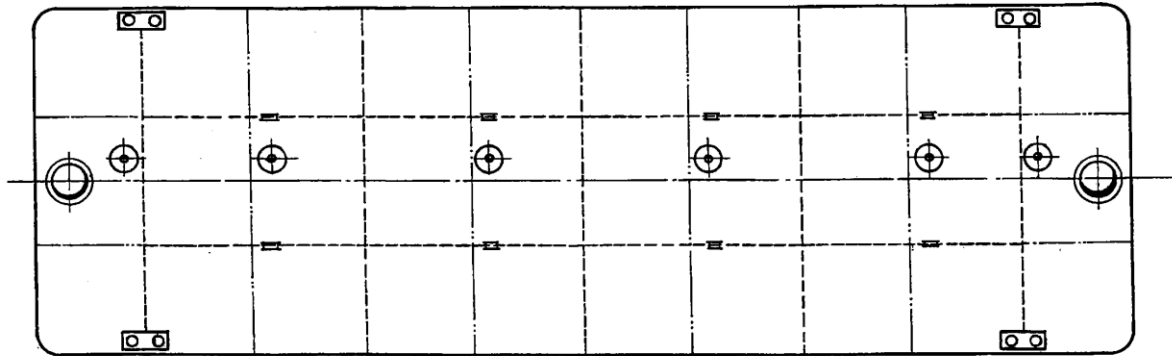


<b>L.O.A.:</b>	25,13m	<b>Max. load:</b>	267 t
<b>B.O.A.:</b>	8,04m	<b>Spuds length:</b>	11m ( 2 spuds )
<b>Depth moulded:</b>	2,03m	<b>Spud-pole tube diameter:</b>	Ø 460mm
<b>Draught min:</b>	0,42m	<b>ENI:</b>	02315513
<b>Draught max:</b>	1,79m	<b>Year Built:</b>	1979
<b>Air draft max:</b>	2,23m		

**BOVENAANZICHT**



**ZIJAAANZICHT**

